



## Rosecroft

Chester Le Street DH2 1NL

£190,000







This footer paragraph is an example only and should not be relied upon as complying with current legislation. These particulars, whilst believed to be accurate are set out as a general outline only for guidance and do not constitute any part of an offer or contract. Intending purchasers should not rely on them as statements of representation of fact, but must satisfy themselves by inspection or otherwise as to their accuracy. No person in this firm's employment has the authority to make or give any representation or warranty in respect of the property.

# Rosecroft

Chester Le Street DH2 1NL



We are delighted to offer to the market this three bedroom detached house, located in Pelton close to Chester le street town centre with excellent transport links throughout the North East. Close to the A1(M), the property offers direct links to Newcastle, Sunderland and Durham.

The property is briefly comprising entrance hallway, kitchen, living room, storage cupboard and WC to the ground floor. Whilst to the first floor there are three bedrooms, including master with en-suite shower room and family bathroom with three piece suite.

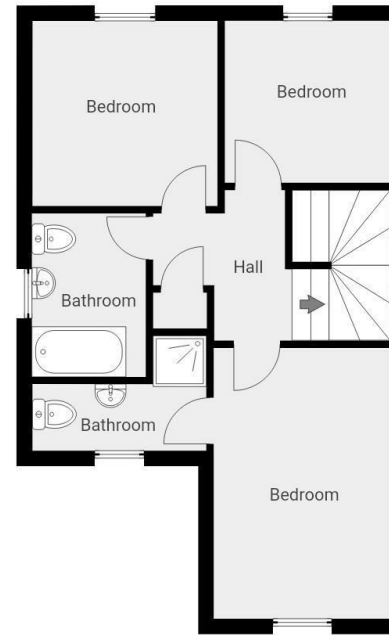
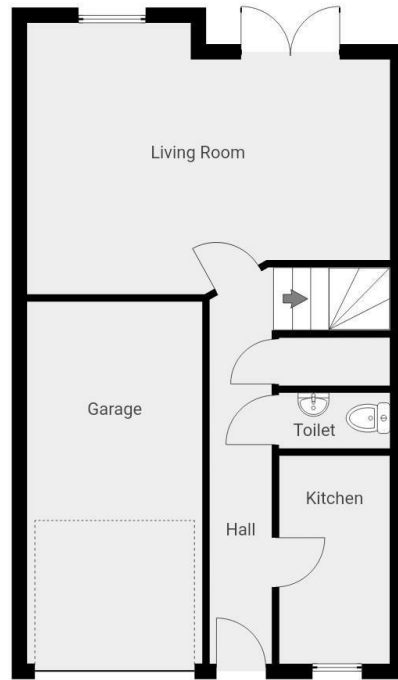
Externally the property has off street parking with paved driveway, leading to the garage with up and over door and side access, whilst to the rear of the property there is a lawned garden with patio area.

EPC rating C  
Council tax band C  
No onward chain

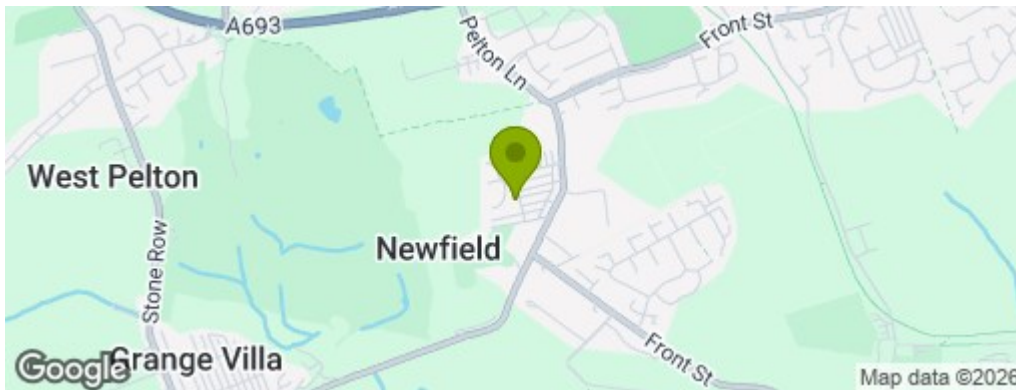
## PLEASE NOTE

Please be advised that these for sale details and images have been supplied to us via a third party. We

therefore cannot verify there accuracy and would recommend that you arrange to visit and take a look for yourself.



THIS FLOORPLAN IS PROVIDED WITHOUT WARRANTY OF ANY KIND. SEVEN KEYS DISCLAIMS ANY WARRANTY INCLUDING, WITHOUT LIMITATION, SATISFACTORY QUALITY OR ACCURACY OF DIMENSIONS.



## Property Information

**0191 372 9898**

Suite 6, 15 North Burns, Chester-le-Street, County Durham, DH3 3TF  
[sales.cls@venturepropertiesuk.com](mailto:sales.cls@venturepropertiesuk.com)